



Partner of Stora Enso

Ellerslie Road

Glasgow, United Kingdom

EURBAN

CCG Group's Ellerslie Road, at seven storeys is Scotland's tallest timber building and is built by Eurban using Stora Enso CLT for the superstructure. Built on the banks of Glasgow's River Clyde as mid-rent affordable homes for Sanctuary Scotland (part of Sanctuary Group), the Yoker building is spearheading CCG's drive to increase the use of CLT in Scotland and is the culmination for CCG of an extensive R&D process looking at CLT for the Scottish market. The building has advanced regulatory understanding of the material with Scotland's Building Control and fire and gas industries. A total of 1 240 m³ CLT and Glulam by Stora Enso was used for this construction project.

Residential Multi-storey Building Concept by Stora Enso

Multi-storey buildings in massive wood are high-performing, renewable structures that can help to meet the growing demand for new urban buildings and more efficient, sustainable construction.

[Click here to learn more about our residential multi-storey building concept.](#)



Winner of STA Award - Social Housing project of the Year 2018



Photo credit: CCG (Scotland) Ltd.



General

Delivery year

2018

Building type

Flats

Area (m²)

4000

Storeys

7

Units

42

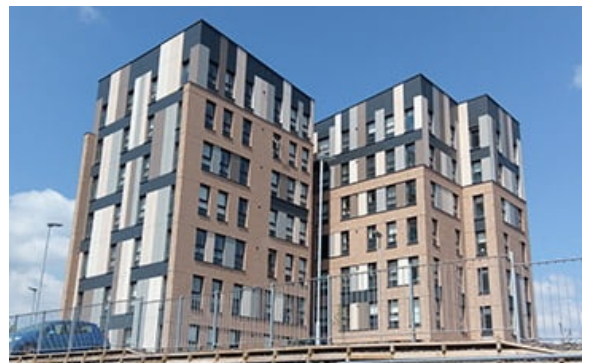


Photo credit: CCG (Scotland) Ltd.



 **Products**

Products
CLT, Glulam

Product quality
Non visible quality (NVI)

Product volume (m³)
1 240

Product delivery duration (weeks)
16

Number of truck deliveries
25



Photo credit: MAST Architects

 **Team**

Partner of Stora Enso
Eurban

Developer
Sanctuary Scotland

Architect
MAST Architects

Structural Engineer
Smith & Wallwork Engineers
Eurban

Main contractor
CCG

Specialist Timber Contractor
Eurban

 **Others**

Timber superstructure erection duration (weeks)
16